

EGFR(L861Q)

Catalog Number: 26077

Gene Symbol: EGFR/HER1/ERBB1

Description: Anti-EGFR(L861Q) Mouse Monoclonal Antibody

Background: EGFR is a receptor tyrosine kinase binding ligands of the EGF family and activating several signaling cascades to convert extracellular cues into appropriate cellular responses. It activates at least 4 major downstream signaling cascades including the RAS-RAF-MEK-ERK, PI3 kinase-AKT, PLCgamma-PKC and STATs modules. Defects in EGFR are associated with lung cancer (LNCR).

Immunogen: A synthetic peptide from the internal region of EGFR, which includes the mutation of L861Q, human origin.

Tested Applications: ELISA, WB, IF, IHC

Recommended Dilutions:

ELISA: 1:1000-1:5000

WB: 1:1000-1:5000

IHC: 1:50-1:200

Concentration: 1 mg/ml

Host: Mouse

Clonality: Monoclonal

Purity: Purified from ascites

Format: Liquid

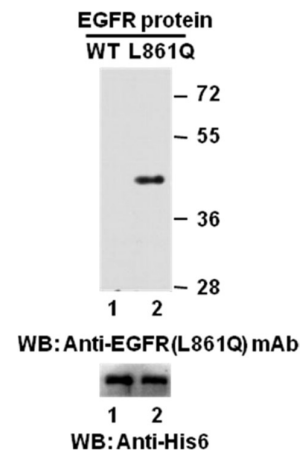
Preservative: No

Constituents: PBS (without Mg²⁺ and Ca²⁺), pH7.4, 150 mM NaCl, 50% glycerol

Species Reactivity: Recognizes EGFR (L861Q), but not wild type EGFR from vertebrates.

Storage Conditions: Store at -20°C. Avoid repeated freezing and thawing

Western blot:

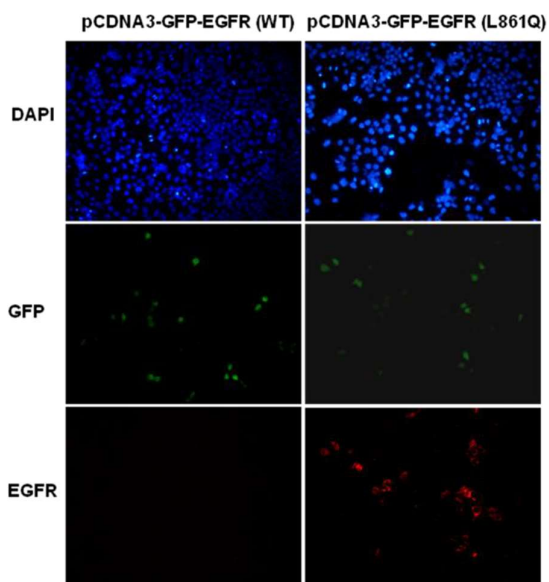


Western blot analysis of recombinant EGFR (L861Q) and wild type proteins.

Purified His-tagged EGFR (L861Q) protein (amino acids 702-987, lane 2, Cat. # 10211) and corresponding wild type protein (lane 1, Cat. # 10210) were blotted with anti-EGFR (L861Q) mouse monoclonal antibody (Cat. # 26077). Proteins loading (bottom) were blotted with anti-His-tag monoclonal antibody (Cat. # 28004).

FOR RESEARCH USE ONLY. NOT FOR DIAGNOSTIC APPLICATIONS

Immunofluorescence:



Immunofluorescence of cells expressing EGFR proteins with anti-EGFR (L861Q) antibody.

HEK293T cells were transfected with pCDNA3-GFP-EGFR (WT) plasmid (left column) or pCDNA3-GFP-EGFR (L861Q) plasmid (right column), then fixed and stained with anti-EGFR (L861Q) monoclonal antibody (Cat. # 26077).

FOR RESEARCH USE ONLY. NOT FOR DIAGNOSTIC APPLICATIONS